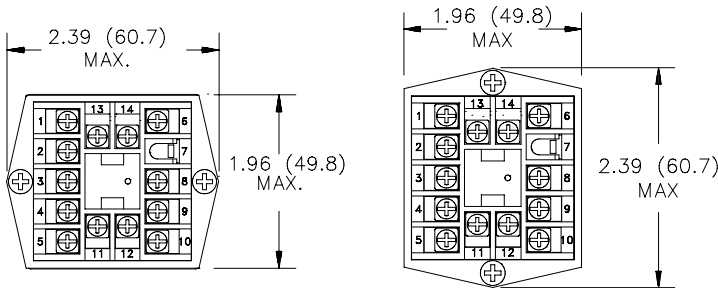


### MULTIPLE UNIT STACKING

The T48 is designed for close spacing of multiple units. Units can be stacked either horizontally or vertically. For vertical stacking, install the panel latch with the screws to the sides of the unit. For horizontal stacking, the panel latch screws should be at the top and bottom of the unit. The minimum spacing from center line to center line of units is 1.96" (49.8 mm). This spacing is the same for vertical or horizontal stacking.

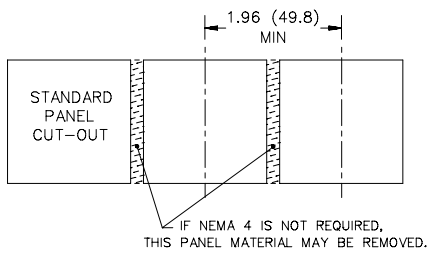
*Note: When stacking units, provide adequate panel ventilation to ensure that the maximum operating temperature range is not exceeded.*



PANEL LATCH INSTALLED FOR VERTICAL UNIT STACKING

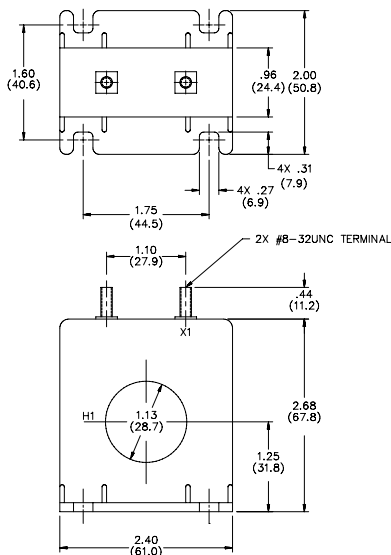
PANEL LATCH INSTALLED FOR HORIZONTAL UNIT STACKING

PANEL CUT-OUT SPACING FOR MULTIPLE UNIT STACKING. HORIZONTAL ARRANGEMENT SHOWN.



### ACCESSORY - CURRENT TRANSFORMER-50A

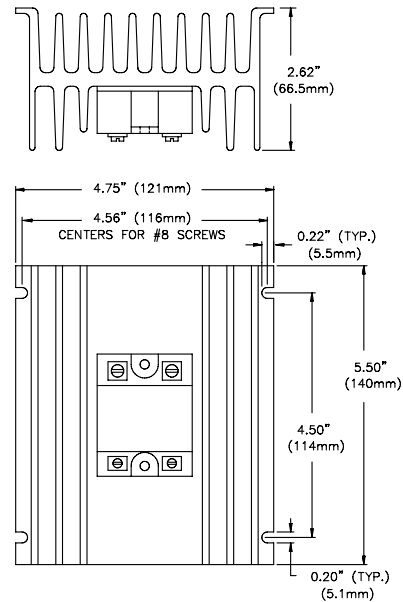
The external Current Transformer is used when specifying the T48's equipped with the Heater Current Monitor.



- Part Number:** CT005001
- Current Ratio:** 50 : 0.1 (Amperes)
- Operation Frequency:** 50 to 400 Hz
- Insulation Class:** 0.6 KV BIL, 10 KV full wave.VA 60 H2 Burden 2.5
- Terminals:** Brass studs No. 8-32 UNC with one flat washer, lockwasher, and hex nut.
- Window Diameter:** 1.13" (28.7 mm)
- Weight:** 8 oz (226.0g)

### ACCESSORY - EXTERNAL SSR POWER UNIT

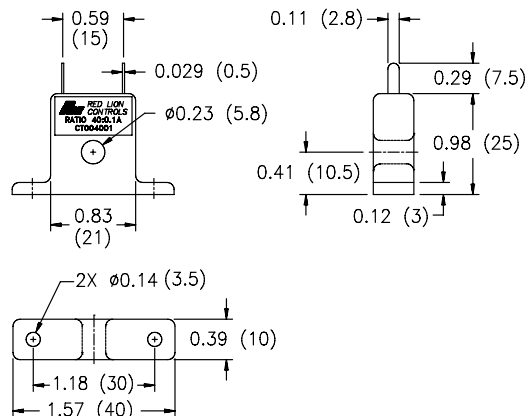
The external SSR Power Unit is used with T48's equipped with Logic/SSR Drive outputs to switch loads up to 240 VAC @ 45 Amps, 25°C ambient. The unit is operated by applying a low level DC control signal to the isolated input. The unit features zero cross detection circuits which reduces radiated RFI when switching load currents. With no contacts to wear out, the SSR Power Unit provides virtually limitless operational life. The unit is supplied with an integral heat sink for immediate installation.



- External SSR Power Unit:**
- Part Number:** RLY50000
- Switched Voltage Range:** 50 to 280 VAC
- Load Current:** 45 Amps max. @ 25°C ambient temperature  
35 Amps max. @ 50°C ambient temperature
- On State Input:** 3 to 32 VDC @ 1500 Ω impedance. (isolated)  
(Use Logic/SSR drive output .)
- Off State Input:** 0.0 to 1.0 VDC
- Size:** 5.5" (14 cm) L x 4.75" (12 cm) W x 2.62" (6.6 cm) H

### ACCESSORY - CURRENT TRANSFORMER-40A

The external Current Transformer is used when specifying the T48's equipped with the Heater Current Monitor.



- Current Transformers:**
- Part Number:** CT004001
- Current Ratio:** 40 : 0.1 (Amperes)
- Max Heater Current:** 50 A
- Dielectric Strength:** 1000 VAC (For 1 minute)
- Vibration Resistance:** 50 Hz (Approx 10 G)
- Terminals:** Solder Type
- Window Diameter:** 0.228" (5.8 mm)
- Weight:** 0.406 oz (11.5 g)